

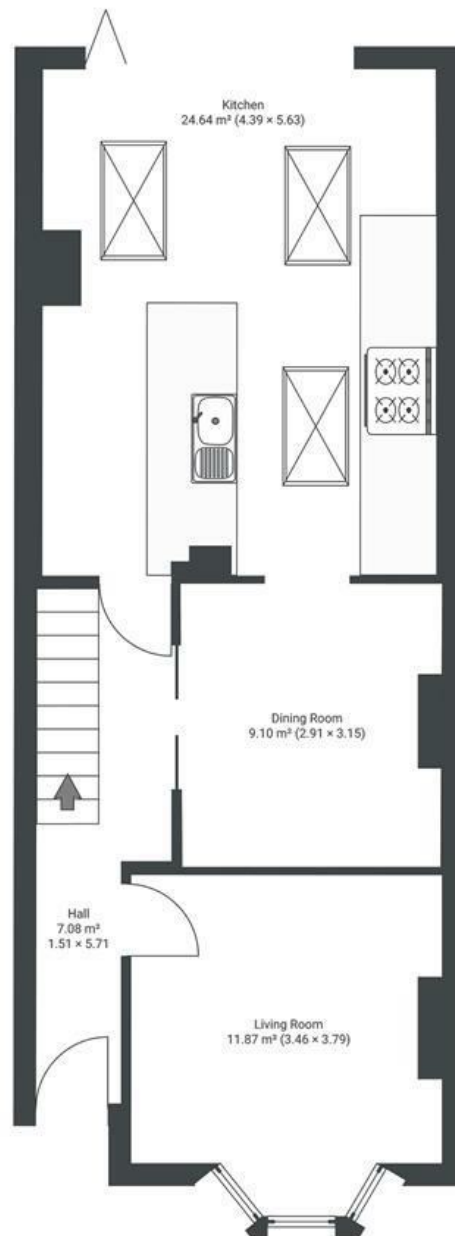
# Milner Road

## ASHLEY DOWN

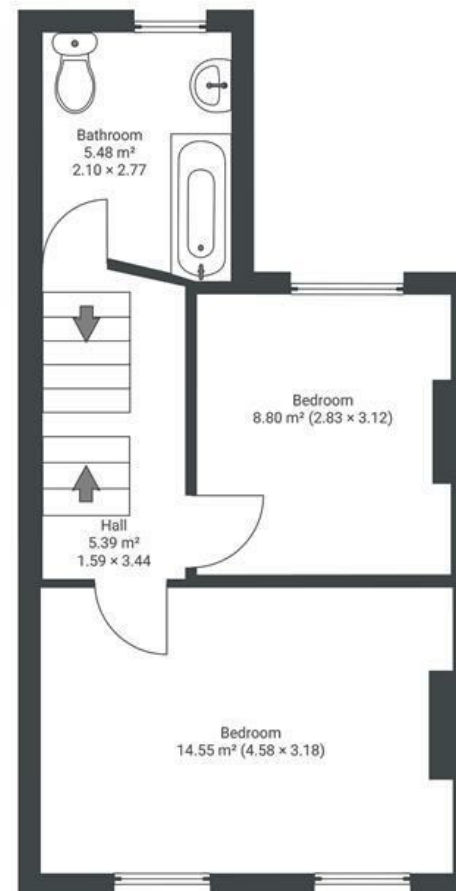
APPROXIMATE FLOOR AREA  
113 SQM / 1217 SQFT



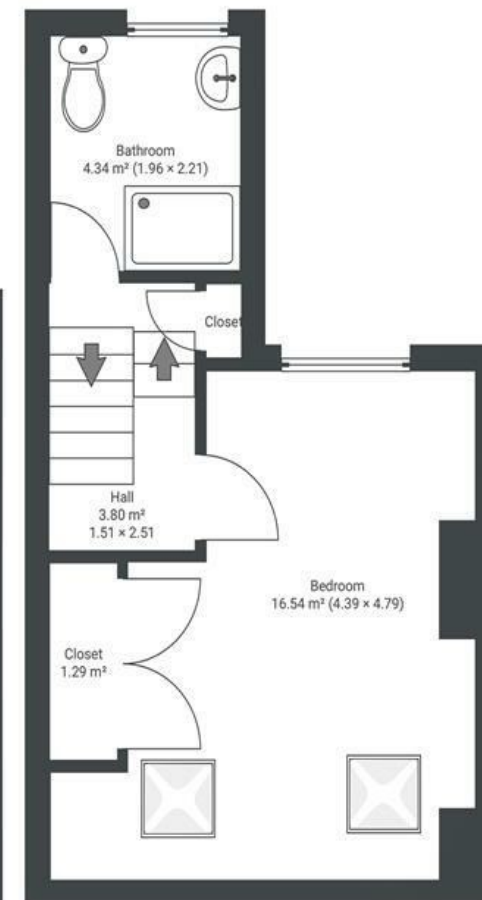
GROUND FLOOR



FIRST FLOOR



SECOND FLOOR



Boardwalk

# Milner Road

## ASHLEY DOWN, BRISTOL



£595,000



3 Bedrooms



Bristol, BS7  
9PO



2 Bathrooms

*"It was very much love at first sight when we found this house. The beautiful open-plan kitchen/living room was a particular highlight for us, with the bifold kitchen doors opening up to the garden on warm summer evenings. We'd often have friends round and sit around the table on the decking outside with some cold beers, light up our wood-fire pizza oven or roast some sausages and kebabs on the BBQ. Milner Road is absolutely lovely, we became good friends with our neighbours and had friends a few doors down who would pop in for a coffee and a chat."*

